



Beyond Baskerville

Sherwood Post 19 Guide

Overview

Pathways Overview

Timeline

Day Provisions

Independent Specialist Colleges

Frequently Asked Questions

Baskerville Support

External Support

Previous Destination Data

Beyond Baskerville



The transition period following Baskerville is an exciting time for both students and their families. However, we understand it can also be a difficult time to know navigate.

This guide is designed to assist you in navigating and preparing for your child's steps after Baskerville, ensuring that students receive the support they need and select the pathway that best suits them.

While this guide aims to provide all the necessary information, please don't hesitate to reach out if you have any questions or require further assistance.

You can contact me via email at P.Carbery@baskvill.bham.sch.uk or call the school office at 0121 427 3191.

Kind regards,
Paul Carbery (Careers Co-ordinator)

Pathways Overview

Our Sherwood students normally leave Baskerville after year 14 when they are 19 years old. With the majority of these students continuing on to Day Provisions. On occasion students do continue on to Specialist Further Education Colleges, however this is subject to funding being agreed from the council. Below you can find a description, information and providers for both pathways.

Day Provision

Day provisions provide person-centered programmes for individuals with disabilities, emphasizing daily living skills. These community centers collaborate with families to develop tailored plans, serving as an alternative to college.

Specialist further education (FE) colleges

A specialist further education college provides education for young people with SEN only. Some specialist colleges help their students to attend courses in mainstream colleges.

Timeline

This timeline outlines key steps and actions for guardians to support their young person throughout KS5. As well as other important steps, to ensure a smooth transition to their pathway Beyond Baskerville.

1

YEAR 10/11



- During year 10, you should spend some time looking at post 16 provisions. This can be schools like Baskerville or other pathways.
- At the start of year 11 you must submit your preference for the next year. You must do this even if your preference is Baskerville.

2

YEAR 12



- Pathways explored in lessons.
- Skills developed throughout the curriculum.
- Career and enterprise co-ordinator meetings.
- You should start researching and visiting day centres and colleges if appropriate.

3

YEAR 13



- Career Action Plan and PFA update.
- Final chance to visit and research of provisions.
- State preferences of provisions at EHCP review (we recommend 2-3 different provisions).

4

YEAR 14



- Evidence of individual needs collected.
- SENAR consults with placements stated on previous EHCP review.
- If accepted SENAR makes offer by letter.
- If rejected alternative provision should be found.

5

BEYOND



When a student leaves Baskerville, they will have access to support from their new provision and other local providers. If they need additional assistance, they are welcome to reach out to the school for help. We also love to hear how our former students are doing, so please feel free to keep us updated on their progress.

Day Provisions

Day provisions offer person centred programmes to people with disabilities that are focussed on delivering engaging activities based on the individual need with the intention of:

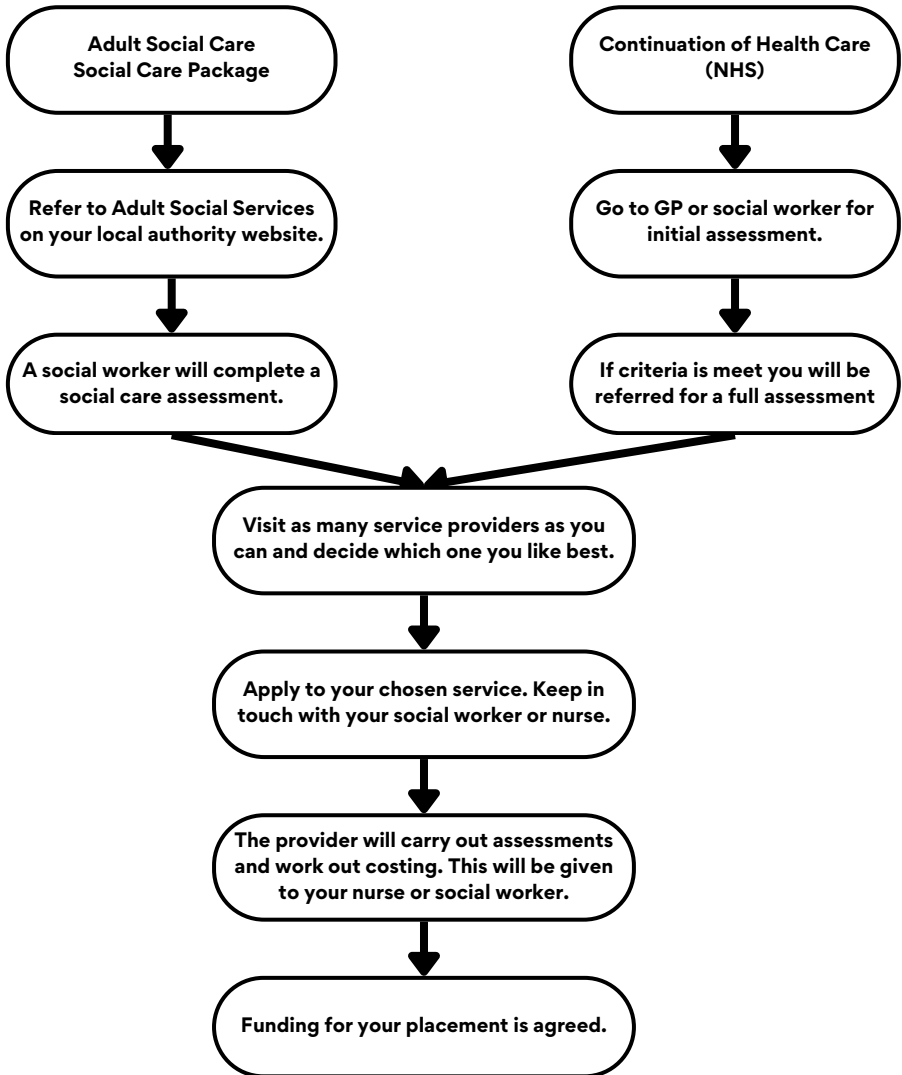
- Improving daily living skills
- Increasing confidence in communicating with others
- Building belief and self-esteem through positive achievement
- Setting goals
- And reducing vulnerability

These centres are based in the community and work closely with the families to devise a plan that is right for their young person and are an alternative to college.



Day Provisions

There are two main sources of funding for day provisions, in which you will need to apply for yourselves. You may be eligible for both pathways.



Alternatively it is also possible to self fund places to these provisions too.

Process of applying to a day provision


Funding for Day centre provision will be from social services or the NHS. A social worker or community nurse needs to be allocated to the young person so that they can make an application for funding on their behalf.


A social care assessment can be requested through the local authority website. The link to the Birmingham LA is https://www.birmingham.gov.uk/info/20018/adult_social_care/113/arrange_a_social_care_assessment

Day Provisions (Birmingham City Council provided)

Alderman Bowen


Ward: Heartlands


 **0121 464 1470**

 125 Broadway Avenue,
Bordesley Green,
B9 5YD

Ebrook Day Centre


Ward: Sutton Trinity


 **0121 675 6585**

 Shooters Hill, Sutton
Coldfield, Sutton
Coldfield, B72 1HX

Harborne Day Centre

Ward: Quinton

 **0121 675 0030**

 370 West Boulevard,
Harborne, B32 2PP

Heartlands Resource Centre


Ward: Nechells

0121 303 0752

6 Inkerman Street,
Nechells, B7 4SB

Hockley Skills & Development Centre


Ward: Soho and
Jewellery Quarter

 **0121 303 9747**

 27 All Saints Road,
Hockley, B18 5QB

Moseley Day Centre

Ward: Moseley

 **0121 303 0249**

 1 Amesbury Road,
Moseley, B13 8LD

Day Provisions

(Externally provided)

Organisation	Main Address	Main Client Group	Number of sites	Ward (s)	Telephone Number
The ARK Centre	49-51 Shirley Road, Acocks Green, Birmingham B27 7XU	Learning Disability/ Autism	1	Acocks Green	0121 708 0080
Better Pathways	201-206 Alcester Street, Digbeth, B12 NQ	Mental Health/Learning Disability/Autism	1	Bordesley & Highgate	0121 773 1455
Blue Cedars Day Centre	115 Pershore Rd, Birmingham, B5 7NX	Learning Disability/ Autism	1	Balsall Heath West	0121 446 4975
Care First Management Services	(Head Office) Station House, Great Barr Business Park, Baltimore Road, Great Barr B42 1DY	Learning Disability/ Autism	5 (used for different services)	Perry Barr Druids Heath & Monyhull x 2 Heartlands Out of Area - Walsall	0121 308 6555
Cerebral Palsy Midlands	17 Victoria Road, Harborne, B17 0AQ	Cerebral Palsy	1	Harborne	0121 427 3182
Family Care Trust	(Head Office) Newlands Bishop Farm, Berry Hall Lane, Catherine de Barnes, Solihull, B91 2RY	Older Adults/ Learning Disability/ Autism	3 Farm/ gardening project/ dementia centre	Out of Area - Solihull	0121 711 2939
Father Hudson's Care	St George's House, Gerard's Way, Coleshill, Birmingham, B46 3FG	Profound and Multiple Learning Disability (PMLD)	1	Out of Area - Coleshill	01675 434000
Focus Birmingham	48-62 Woodville Road, Harborne, Birmingham, B17 9AT	Learning Disability/ Autism/PMLD	1	Quinton	0121 478 5285/525 7

Day Provisions

(Externally provided)

Organisation	Main Address	Main Client Group	Number of sites	Ward (s)	Telephone Number
Forward Day Services	48 Lincoln Road, Olton, Solihull, B27 6PA	Learning Disability/ Autism	1	Out of Area - Solihull	0121 706 1676
Jaffray Care Group	Daycare Centre, 55 Marsh Lane, Erdington, B23 6HX	Learning Disability/ Autism	1	Stockland Green	0121 377 2800 / 2420
Kiwi Kare Day Service	Aston Parish Church, Witton Lane, Aston, Birmingham B6 6QA	Learning Disability	1	Aston	07802 554 612
Mackadown Day Services	628 Chester Road, Wylde Green, Birmingham B73 5JR	PMLD	2	Sutton Vesey Glebe Farm Tile Cross	0121 770 0123
Midland Mencap	Pine Wood, Bell Heath Way, Woodgate Business Park, Birmingham B32 3BZ	Learning Disability	0	Provide support in the community	0121 427 6404
Nevin Day Centre	Nevin House, 20-22 Key Hill, Hockley, B18 5PB	Learning Disability/ Autism	1	Soho and Jewellery Quarter	0121 554 8460
New Pastures Care Farm	Whitegates Centre (Head Office), New Pastures Care Farm, Whitegates, Chesterton Road, Harbury, Warwickshire	Learning Disability	2	Out of area - Warwickshire	07966 769 927 / 07795 438609
Roselea Day Centre	St Margaret's Church Hall, Jarvis Road, Erdington, Birmingham B23 5RS	Learning Disability/ Autism	1	Erdington	0121 350 7100

Day Provisions

(Externally provided)

Organisation	Main address	Main Client group	Number of sites	Wards	Telephone number
SAF's Care	Windmill Community Centre, Messenger Road, Smethwick, B66 3DX	Learning Disability	1	Out of Area - Sandwell	0121 558 2198
Satori House	495 Peterbrook Road, Solihull	Learning Disability	1	Out of Area - Solihull	07594 340106
Sense	Sense Touch Base, 750 Bristol Road, Selly Oak, B29 6NA	Sensory Impairment/ Learning Disability/ Autism	2	Bournville and Cotteridge Out of Area - Sandwell	0121 415 2720
Stepping Stones Project	ARK Community Church, St James Road, Sutton Coldfield, B75 5EH	Learning Disability	1	Sutton Mere Green	07772 185895
Sutton Support Services	Wylde Green Community Hall, Emscote Drive, Wylde Green, Sutton Coldfield B73 5NE	Learning Disability/ Autism	1	Sutton Wylde Green	0121 377 7507
Thrive	Horticultural Training Centre, Kings Heath Park, Birmingham B14 7TQ	Learning Disability/ Autism	1	Brandwood & Kings Heath	0121 293 4531
TMS Holly House	2a Roebuck Lane, West Bromwich, B70 6QB	Learning Disability	1	Out of Area - Sandwell	0121 500 5877
Trinity Respite Services (formerly Trinity Specialist College)	The Lindridge, Lindridge Road, Sutton Coldfield, B75 7JB	Learning Disability/ Autism/PMLD	1	Sutton Reddicap	0121 378 3242

Specialist FE Colleges and Schools with Post 19

Queen Alexandra College (QAC)

Harborne



<https://www.qac.ac.uk/>



0121 4285050



info@qac.ac.uk



**Court Oak Road, Harborne
Birmingham, B17 9TG**

a specialist college based in Birmingham that has a local, regional and national reach.

Heart of Birmingham

Vocational College
Washwood Heath



www.hbvc.ac.uk



0121 8090666



info@hbvc.ac.uk



**328 Bromford Ln, Washwood
Heath, Birmingham B8 2SD**

Gain experience and new skills to help you become more independent and to prepare you for employment.

Trinity Specialist College

Sutton Coldfield



trinityspecialistcollege.co.uk/



0121 378 3242



info@trinityspecialistcollege.co.uk



**The Lindridge, Lindridge
Road, B75 7JB**

Small and friendly based in a much extended farmhouse located in a beautiful rural setting surrounded by farm land.

Ruskin Mill Trust

A variety of colleges including Argent College and The Glasshouse



rmt.org/colleges/



**01453 837500 (please look on
website for individual colleges)**



enquiries@rmt.org



**Argent - Birmingham
The Glass House - Stourbridge**

Ruskin Mill Colleges each specialises in key industries. Argent on craft and jewellery. Glasshouse on farming, animal care, forge work, and greenwood work activities.

Hive

Erdington



<https://www.wsucbpt.co.uk/>



0121 306 4800



enquiry@wsucbpt.co.uk



**Perry Common Road
B23 7AT**

Offer course and employment based pathways to explore and develop their skills and abilities for their future.

Victoria College

Northfield



www.victoriacollege.bham.org.uk/



0121 477 0274



enquiry@victoriacollege.bham.org.uk



**Bell Hill, Northfield
Birmingham B31 1LD**

Victoria is a vibrant, specialist college for young people aged 19 to 25 years with Profound and Multiple Learning Difficulties.

Frequently asked questions

Keep a look out this page will be updated soon

Question

Answer

Question

> Answer

Question

> Answer

Question

> Answer

Baskerville Support



Within these pages, you will find a range of internal support contacts who are here to assist you in navigating your child's transition to their next steps. Whether you need guidance on planning for adulthood, exploring future pathways, or accessing specialist support, our team is available to help. You can also reach out to your child's teacher, who will work alongside you to ensure that the transition is as smooth and positive as possible. Together, we can provide the support needed to make informed decisions for your child's future.



Paul Carbery

Careers and Enterprise Co-ordinator

Paul roles involves supporting students and parents with transitions and preparing students for life beyond Baskerville. Working with a range of stakeholders including colleges and companies to provide up to date information and opportunities.

Email: P.Carbery@Baskvill.bham.sch.uk



Arron Alderton

Careers Lead and Assistant Head

Arron has overall strategic overview of our careers provision here at Baskerville including transitions. He is also assistant head with responsibilities including head of key stage 5. This includes ensuring curriculum for ks5 students is supporting them developing key skills and knowledge for beyond Baskerville.

Email: A.Alderson@Baskvill.bham.sch.uk

Baskerville Support



Ellie Allen

Assistant Head Teacher

Ellie is responsible for our students in Sherwood, She supports students from Willows, Maple, Elms, Oaks and Sycamores.

Email: E.Allen@Baskvill.bham.sch.uk



Anita Kumari

Pastoral Manager: Family Support and Engagement

Anita helps run Friends at Baskerville as well as having responsibility for Student attendance, raising attendance and punctuality and resolving any concerns. She supports families with any issues within school or home and attempt to resolve them.

Email: A.Kumari@Baskvill.bham.sch.uk



Lucy Case

EHCP Co-ordinator

Lucy's role is reviewing EHCPs with parents/students, we will use reviews from Year 9 onwards to talk about what adulthood might look like. I work with the Careers Coordinator to help identify next steps for students/parents and helping make sure the journey is a smooth one! Always at the end of an email/call if you need me.

Email: L.Case@Baskvill.bham.sch.uk

External Support



Organisation	Description	Contact
Birmingham Careers Service	Variety of support and resources in supporting young people into employment.	www.birminghamcareersservice.co.uk/marketplace/ SEND info room 5
Birmingham Local offer	Here you will find help, advice and information about the services available for your child or young person.	www.localofferbirmingham.co.uk/
Adult Social Care Services & Support	Range of services and support.	0121 303 1234 CSAdultsocialcare@birmingham.gov.uk
Natspec	Membership association for organisations offering specialist further education.	natspec.org.uk
National Career Service	Careers advice - job profiles, information and resources National Careers Service.	nationalcareers.service.gov.uk/
Department of Work and Pensions	Support with getting into employment as well as benefits.	www.gov.uk/government/organisations/department-for-work-pensions
Preparing for Adulthood	person-centred planning materials as part of our delivery of the national Preparing for Adulthood programme.	www.ndti.org.uk/resources/preparing-for-adulthood-all-tools-resources

External Support



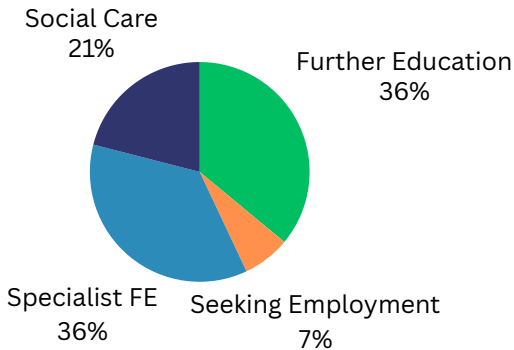
Forward Thinking Birmingham	Our new, modern mental health service offers support, care and treatment for all 0-25s	forwardthinkingbirmingham.nhs.uk/
Travel Assist	Working to develop travel solutions that help children and young people to access education.	www.birmingham.gov.uk/info/50052/school_travel
Early help team	Early help, links together a range of agencies to support children and families.	lscpbirmingham.org.uk/working-with-children/early-help/
SENAR	SENAR is responsible for conducting EHCP assessments and annual reviews.	www.localofferbirmingham.co.uk/education-health-and-care-plan/senar/
IPSEA	Offers free and independent legally based information, advice and support	www.ipsea.org.uk/
SENDIASS	Free confidential service that offers impartial information and advice.	sendiass@Birmingham.gov.uk

SUPPORT

Destination Data

At Baskerville, we celebrate our former students' journeys as they grow Beyond Baskerville. Each leaver follows a unique path aligned with their aspirations. Here's a look at the diverse pathways pursued by our leavers in the last academic year:

Overall Baskerville Destinations 23/24



Sherwood Destinations 23/24

Social Care	75%
Specialist College	25%

For our year 11 students many continued here at Baskerville in one of three routes:

- *Continued on our Sherwood provision.*
- *Continued on to our Ennerdale (KS5) provision focusing on vocational courses and employability.*
- *Moved to our Bournville provision at South and City College Birmingham.*

We also had students in year 11 move on to other provisions including:

- Solihull College
- SCCB Fusion



We are a school where individuals are valued and helped to achieve their personal best. Our holistic, aspirational approach to education enables our students to make a full and positive contribution to school and community and fully prepares them for future enjoyment and fulfilment.

Allan Lacey
Head Teacher