



# Beyond Baskerville

## Ennerdale Post 19 Guide

# Overview

**Pathways Overview**

---

**Timeline**

---

**Independent Specialist Colleges**

---

**FE Colleges**

---

**Supported Internships**

---

**Apprenticeships**

---

**Day Provisions**

---

**Frequently Asked Questions**

---

**Baskerville Support**

---

**External Support**

---

**Previous Destination Data**

---

# Beyond Baskerville



The transition period following Baskerville is an exciting time for both students and their families. However, with numerous pathways and a variety of individual providers available, it can also feel overwhelming.

This guide is designed to assist you in navigating and preparing for these post-19 transitions, ensuring that students receive the support they need and select the pathway that best suits them.

While this guide aims to provide all the necessary information, please don't hesitate to reach out if you have any questions or require further assistance.

You can contact me via email at [P.Carbery@baskvill.bham.sch.uk](mailto:P.Carbery@baskvill.bham.sch.uk) or call the school office at 0121 427 3191.

Kind regards,  
Paul Carbery (Careers Co-ordinator)

## Pathways Overview

### Further Educational Colleges

Mainstream colleges offer a range of courses to suit all learning levels, including academic (A Levels, GCSEs), vocational (BTECs), life skills, and courses combining study with work experience. They will also have some level of SEN support.

### Specialist further education (FE) colleges

A specialist further education college provides education for young people with SEN only. Some specialist colleges help their students to attend courses in mainstream colleges.

### Supported Internship Programme

A supported internship is a training programme for 16-24-year-olds with EHC plans aimed at securing paid employment. Participants receive personalised programs, on-the-job training, and a work coach.

### Day Provision

Day provisions provide person-centered programmes for individuals with disabilities, emphasizing daily living skills. These community centers collaborate with families to develop tailored plans, serving as an alternative to college.

### Traineeship

This programme helps young people acquire skills for jobs or apprenticeships through unpaid work experience and study, lasting up to six months.

### Apprenticeships

A programme that combines study towards qualifications with paid-on-the-job training. Apprenticeships are open to young people over 16 with or without EHC plans. They can lead to qualifications from GCSE level up

# Timeline

This timeline outlines key steps and actions for guardians to support their young person throughout KS5. As well as other important steps, to ensure a smooth transition to their pathway Beyond Baskerville.

1

## YEAR 10/11



- During year 10, you should spend some time looking at post 16 provisions. This can be schools like Baskerville or other pathways.
- At the start of year 11 you must submit your preference for the next year. You must do this even if your preference is Baskerville.

2

## YEAR 12



- Career Action Plan and Preparing for Adulthood created with careers co-ordinator
- Pathways explored in lessons with Beyond Baskerville booklets provided.
- Career Advisor meetings
- Research and Visit Colleges and other pathways

3

## YEAR 13



- Career Action Plan and PFA update.
- Final visits and research of provisions.
- State preferences of provisions at EHCP review (we recommend 2-3 different provisions).

4

## YEAR 14



- Evidence of individual needs collected.
- SENAR consults with placements stated on previous EHCP review.
- If accepted SENAR makes offer by letter

5

## BEYOND



When a student leaves Baskerville, they will have access to support from their new provision and other local providers. If they need additional assistance, they are welcome to reach out to the school for help. We also love to hear how our former students are doing, so please feel free to keep us updated on their progress.

# Specialist FE Colleges and Schools with Post 19

## Queen Alexandra College (QAC)

Harborne



<https://www.qac.ac.uk/>



0121 4285050



[info@qac.ac.uk](mailto:info@qac.ac.uk)



**Court Oak Road, Harborne  
Birmingham, B17 9TG**

a specialist college based in Birmingham that has a local, regional and national reach.

## Heart of Birmingham

Vocational College  
Washwood Heath



[www.hbvc.ac.uk](http://www.hbvc.ac.uk)



0121 8090666



[info@hbvc.ac.uk](mailto:info@hbvc.ac.uk)



**328 Bromford Ln, Washwood  
Heath, Birmingham B8 2SD**

Gain experience and new skills to help you become more independent and to prepare you for employment.

## Trinity Specialist College

Sutton Coldfield



[trinityspecialistcollege.co.uk/](http://trinityspecialistcollege.co.uk/)



0121 378 3242



[info@trinityspecialistcollege.co.uk](mailto:info@trinityspecialistcollege.co.uk)



**The Lindridge, Lindridge  
Road, B75 7JB**

Small and friendly based in a much extended farmhouse located in a beautiful rural setting surrounded by farm land.

## Ruskin Mill Trust

A variety of colleges including Argent College and The Glasshouse



[rmt.org/colleges/](http://rmt.org/colleges/)



**01453 837500 (please look on  
website for individual colleges)**



[enquiries@rmt.org](mailto:enquiries@rmt.org)



**Argent - Birmingham  
The Glass House - Stourbridge**

Ruskin Mill Colleges each specialises in key industries. Argent on craft and jewellery. Glasshouse on farming, animal care, forge work, and greenwood work activities.

## Hive

Erdington



<https://www.wsucbpt.co.uk/>



0121 306 4800



[enquiry@wsucbpt.co.uk](mailto:enquiry@wsucbpt.co.uk)



**Perry Common Road  
B23 7AT**

Offer course and employment based pathways to explore and develop their skills and abilities for their future.

## Victoria College

Northfield



[www.victoriacollege.bham.org.uk/](http://www.victoriacollege.bham.org.uk/)



0121 477 0274



[enquiry@victoriacollege.bham.org.uk](mailto:enquiry@victoriacollege.bham.org.uk)



**Bell Hill, Northfield  
Birmingham B31 1LD**

Victoria is a vibrant, specialist college for young people aged 19 to 25 years with Profound and Multiple Learning Difficulties.

# Further Educational Colleges

## Access CreativeCollege

Digbeth Campus



[www.accesscreative.ac.uk](http://www.accesscreative.ac.uk)



0800 28 18 42



68 Heath Mill Lane,  
Birmingham B9 4AR

Access Creative College offers industry-led courses in: Esports, Games, Media, Music and Computing

## Solihull College

Blossomfield Campus



[www.solihull.ac.uk](http://www.solihull.ac.uk)



0121 678 7000



Blossomfield Road, Solihull,  
B91 1SB

Full Time and Part Time Courses,  
Apprenticeships & Bespoke  
Employment Training

## Birmingham Metropolitan College (BMET)

Various Campus



[www.bmet.ac.uk](http://www.bmet.ac.uk)



0121 446 4545



Various sites both across  
Birmingham, Greater  
Birmingham and further.

We have a range of courses across Birmingham. With a college close to you.

## University College Birmingham

City Centre



[www.usb.ac.uk](http://www.usb.ac.uk)



0121 604 1000



Summer Row, Birmingham,  
B3 1JB

Study a wide range of A-level, college, undergraduate and postgraduate degree courses

## South and City College

Various Campus including  
Longbridge's Bournville Campus



[www.sccb.ac.uk](http://www.sccb.ac.uk)



0800 111 6311



1 Longbridge Lane,  
Longbridge B31 2TW

Avocational college offering students part-time, full time & apprenticeship courses & more.

## Halesowen College

Birmingham



[info@halesown.ac.uk](mailto:info@halesown.ac.uk)



0121 604 1000



Whittingham Road,  
Halesowen, B63 3NA

Provides a wide range of courses and has a reputation for high standards, an excellent learning environment and a caring, supportive sense of Community.

# Supported Internships

Supported internships are a structured study programme based primarily at an employer. They enable young people aged 16-24 with a statement of SEN, or an Education, Health and Care plan to achieve sustainable paid employment by equipping them with the skills they need for work, through learning in the workplace.

There are a number of organisations that offer supported internships

## Mencap

Mencap Training Academy is a specialist post 16 provider delivering supported internships. Vision is to effectively support more people with a learning disability to move into paid work.



[www.mencap.org.uk](http://www.mencap.org.uk)

## South and City College

Supported Internship Programme. This one-year course is for students who have an EHCP, are working at Level 1 or above and want to progress into employment.



[www.sccb.ac.uk](http://www.sccb.ac.uk)

## Solihull College

Our supported internships enable young people with special educational needs and disabilities (SEND) to achieve sustainable, paid employment. Find out more!



<https://www.solihull.ac.uk/course/support-ed-internships/>

Read the students guide to supported internships [here](#).

# Apprenticeships

Apprenticeships are structured training programs that combine practical work experience with study. They allow individuals to gain hands-on skills in a specific job role while working towards a recognized qualification. Typically lasting 1-4 years, apprenticeships are paid positions and can be found in a variety of industries, from engineering and healthcare to digital and business. They provide a pathway to skilled employment and further career opportunities, offering a blend of learning and earning.

## Apprenticeships

To apply for apprenticeships you **must** apply independently via the government website



[www.gov.uk/apply-apprenticeship](http://www.gov.uk/apply-apprenticeship)

They range in levels. Students usually will be looking for levels 2 or 3.



[UCAS Apprenticeship Support](#)



[Apprenticeship Guide](#)



[EHCP & Apprenticeships](#)

# Day Provisions

Day provisions offer person centred programmes to people with disabilities that are focussed on delivering engaging activities based on the individual need with the intention of

- Improving daily living skills
- Increasing confidence in communicating with others
- Building belief and self-esteem through positive achievement
- Setting goals
- Reducing vulnerability

These centres are based in the community and work closely with the families to devise a plan that is right for their young person and are an alternative to college.

There are a number across the region. You can access a list of providers here.  
Some examples include:

## Care First

Skills Tank and Transition Pathway



[carefirstltd.co.uk/skills-tank/](http://carefirstltd.co.uk/skills-tank/)



0121 308 6555



[wayneh@carefirstltd.co.uk](mailto:wayneh@carefirstltd.co.uk)



**Various Locations**

We aim to give adults with support needs, a better, brighter and more fulfilled life through practical and educational activities.

## Focus

Harborne



[www.focusbirmingham.org.uk](http://www.focusbirmingham.org.uk)



0121 478 5222



[info@focusbirmingham.org.uk](mailto:info@focusbirmingham.org.uk)



**48 Woodville Rd, Harborne,  
Birmingham B17 9AT**

Focus Birmingham is one of the key providers of specialist support, care, advice and guidance with complex disabilities.

## Process of applying to a day provision

Funding for Day centre provision will be from social services or the NHS.

A social worker or community nurse needs to be allocated to the young person so that they can make an application for funding on their behalf.

A social care assessment can be requested through the local authority website. The link to the Birmingham LA is below.

[https://www.birmingham.gov.uk/info/20018/adult\\_social\\_care/113/arrange\\_a\\_social\\_care\\_assessment](https://www.birmingham.gov.uk/info/20018/adult_social_care/113/arrange_a_social_care_assessment)

# Baskerville Support

Within these pages, you will find a range of internal support contacts who are here to assist you in navigating your child's transition to their next steps. Whether you need guidance on planning for adulthood, exploring future pathways, or accessing specialist support, our team is available to help. You can also reach out to your child's teacher, who will work alongside you to ensure that the transition is as smooth and positive as possible. Together, we can provide the support needed to make informed decisions for your child's future.



## Paul Carbery

Careers and Enterprise Co-ordinator

*Paul roles involves supporting students and parents with transitions and preparing students for life beyond Baskerville. Working with a range of stakeholders including colleges and companies to provide up to date information and opportunities.*

**Email: [P.Carbery@Baskvill.bham.sch.uk](mailto:P.Carbery@Baskvill.bham.sch.uk)**



## Arron Alderton

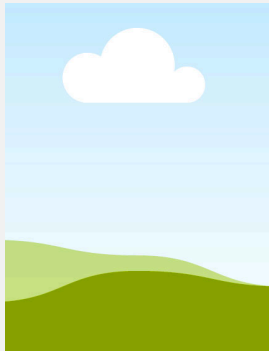
Careers Lead and Assistant Head

*Arron has overall strategic overview of our careers provision here at Baskerville including transitions. He is also assistant head with responsibilities including head of key stage 5. This includes ensuring curriculum for ks5 students is supporting them developing key skills and knowledge for beyond Baskerville.*

**Email: [A.Alderson@Baskvill.bham.sch.uk](mailto:A.Alderson@Baskvill.bham.sch.uk)**



# Baskerville Support



## Rachel Roe

Lead of Baskerville at Bournville

*Rachel is our lead teacher at our college provision at South and City College. She works with all parents and students who attend our Bournville pathway. Supporting with curriculum and next steps.*

**Email: [R.Roe@Baskvill.bham.sch.uk](mailto:R.Roe@Baskvill.bham.sch.uk)**



## Anita Kumari

Pastoral Manager: Family Support and Engagement

*Anita helps run Friends at Baskerville as well as having responsibility for Student attendance, raising attendance and punctuality and resolving any concerns.*

*She supports families with any issues within school or home and attempt to resolve them.*

**Email: [A.Kumari@Baskvill.bham.sch.uk](mailto:A.Kumari@Baskvill.bham.sch.uk)**



## Lucy Case

EHCP Co-ordinator

*Lucy's role is reviewing EHCPs with parents/students, we will use reviews from Year 9 onwards to talk about what adulthood might look like. I work with the Careers Coordinator to help identify next steps for students/parents and helping make sure the journey is a smooth one! Always at the end of an email/call if you need me.*

**Email: [L.Case@Baskvill.bham.sch.uk](mailto:L.Case@Baskvill.bham.sch.uk)**

# External Support



Organisation	Description	Contact
Birmingham Careers Service	Variety of support and resources in supporting young people into employment.	<a href="http://www.birminghamcareersservice.co.uk/marketplace/">www.birminghamcareersservice.co.uk/marketplace/</a> SEND info room 5
Birmingham Local offer	Here you will find help, advice and information about the services available for your child or young person.	<a href="http://www.localofferbirmingham.co.uk/">www.localofferbirmingham.co.uk/</a>
Adult Social Care Services & Support	Range of services and support.	0121 303 1234 <a href="mailto:CSAdultsocialcare@birmingham.gov.uk">CSAdultsocialcare@birmingham.gov.uk</a>
Natspec	Membership association for organisations offering specialist further education.	<a href="http://natspec.org.uk">natspec.org.uk</a>
National Career Service	Careers advice - job profiles, information and resources   National Careers Service.	<a href="http://nationalcareers.service.gov.uk/">nationalcareers.service.gov.uk/</a>
Department of Work and Pensions	Support with getting into employment as well as benefits.	<a href="http://www.gov.uk/government/organisations/department-for-work-pensions">www.gov.uk/government/organisations/department-for-work-pensions</a>
Preparing for Adulthood	person-centred planning materials as part of our delivery of the national Preparing for Adulthood programme.	<a href="http://www.ndti.org.uk/resources/preparing-for-adulthood-all-tools-resources">www.ndti.org.uk/resources/preparing-for-adulthood-all-tools-resources</a>

# External Support



Forward Thinking Birmingham	Our new, modern mental health service offers support, care and treatment for all 0-25s	<a href="http://forwardthinkingbirmingham.nhs.uk/">forwardthinkingbirmingham.nhs.uk/</a>
Travel Assist	Working to develop travel solutions that help children and young people to access education.	<a href="http://www.birmingham.gov.uk/info/50052/school_travel">www.birmingham.gov.uk/info/50052/school_travel</a>
Early help team	Early help, links together a range of agencies to support children and families.	<a href="http://lscpbirmingham.org.uk/working-with-children/early-help/">lscpbirmingham.org.uk/working-with-children/early-help/</a>
SENAR	SENAR is responsible for conducting EHCP assessments and annual reviews.	<a href="http://www.localofferbirmingham.co.uk/education-health-and-care-plan/senar/">www.localofferbirmingham.co.uk/education-health-and-care-plan/senar/</a>
IPSEA	Offers free and independent legally based information, advice and support	<a href="http://www.ipsea.org.uk/">www.ipsea.org.uk/</a>
SENDIASS	Free confidential service that offers impartial information and advice.	<a href="mailto:sendiass@Birmingham.gov.uk">sendiass@Birmingham.gov.uk</a>

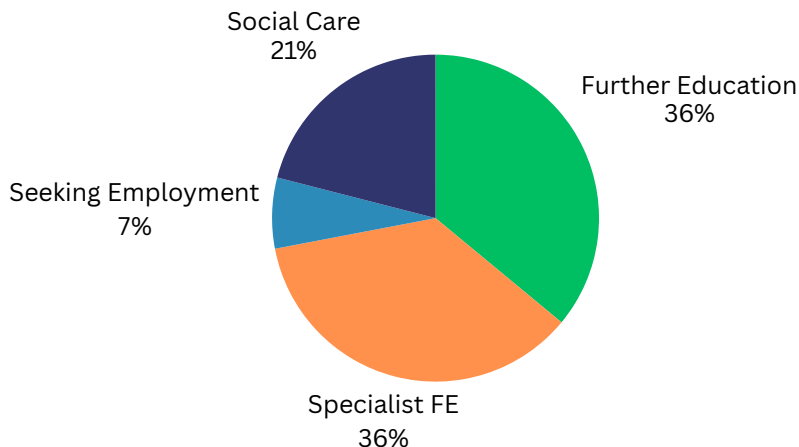
# SUPPORT

# Destination Data

---

At Baskerville, we celebrate our former students' journeys as they grow Beyond Baskerville. Each leaver follows a unique path aligned with their aspirations. Here's a look at the diverse pathways pursued by our leavers in the last academic year:

## KS5 Destinations 23/24



These included a variety of provisions including:

- *Queen Alexandra College*
- *The Hive*
- *South and City College Birmingham*

For our year 11 students many continued here at Baskerville in one of three routes:

- *Continued on our Sherwood provision.*
- *Continued on to our Ennerdale (KS5) provision focusing on vocational courses and employability.*
- *Moved to our Bournville provision at South and City College Birmingham.*

We also had students in year 11 move on to other provisions including:

- Solihull College
- SCCB Fusion



We are a school where individuals are valued and helped to achieve their personal best. Our holistic, aspirational approach to education enables our students to make a full and positive contribution to school and community and fully prepares them for future enjoyment and fulfilment.

**Allan Lacey**  
Head Teacher

---